

REV	DESCRIPTION	DRW.	DATE
00	初版发行	C.W	2023.05.26

Notes/备注:

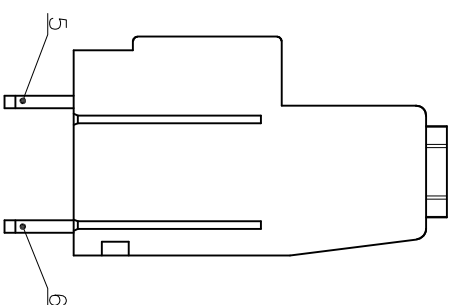
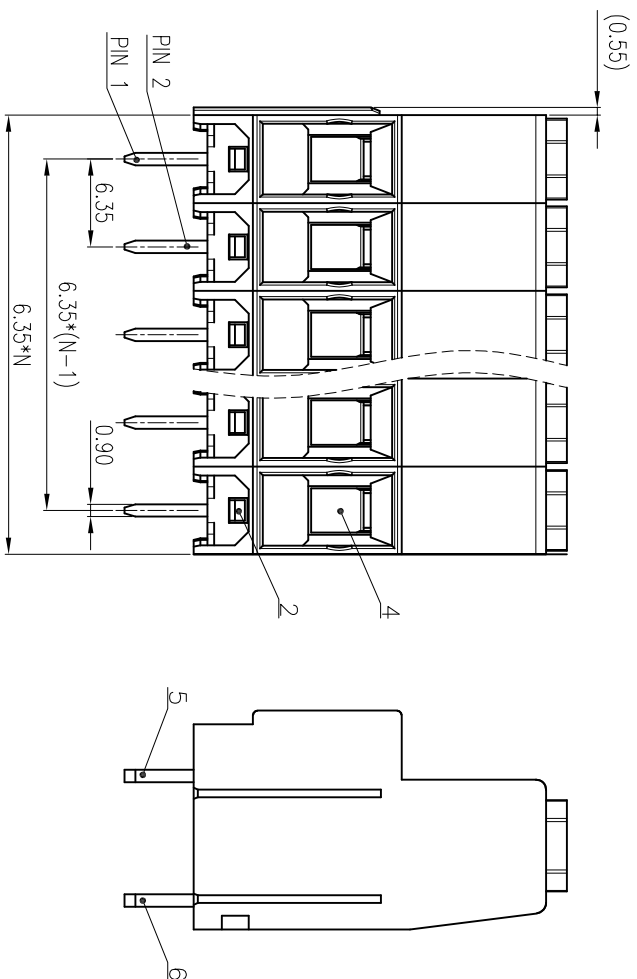
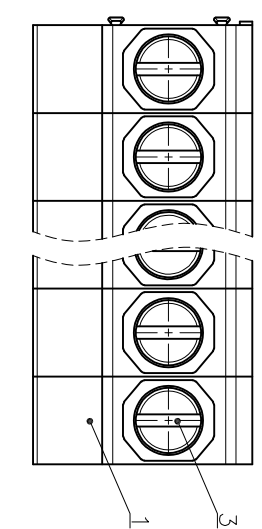
- Electrical properties/电气特性

UL Standard/UL标准	Use Group/应用组别	B	C	D
Rated Voltage/额定电压 (V)	600	600	600	600
Rated Current/额定电流 (A)	30	30	30	5
Withstanding voltage/工频耐受电压	AC 2200V/1Min			

IEC Standard/IEC标准
 Rated Voltage/额定电压 (V): 1000
 Rated Current/额定电流 (A): 32

Overvoltage Category/过电压类别 /Pollution Degree/污染等级	II/2	III/2	III/3
Voltage/电压 (V)	1000	1000	630
Rated Impulse Voltage/冲击耐受电压 (kV)	8	8	8

- Connection data/连接数据
 Wire range/线径范围(AWG/mm²): 28~10/0.2~4
 Stripping length/剥线长度(mm): 7~8
 Wire tightening torque/导线扭矩(N.m): 0.5
- Environmental safety/环境安全
 Operating temperature/工作温度范围(°C): -40~+105
 RoHS compliant/符合RoHS环保要求



Part No./料号说明:

F637-6.35-XXP-1-X

Poles/极数

- 02: 2Poles
- 03: 3Poles
- ...
- 24: 24Poles

Color/颜色

- 1: Brown/棕色
- 2: Red/红色
- 3: Orange/橙色
- 4: Yellow/黄色
- 5: Green/绿色
- 6: Blue/蓝色
- 7: Purple/紫色
- 8: Grey/灰色
- 9: White/白色
- A: Black/黑色

APP.	DATE:	PART NO.:
CHK. <td>DATE:</td> <td>F637-6.35-XXP-1-X</td>	DATE:	F637-6.35-XXP-1-X
DRW. C.W <td>DATE: 2023.05.26</td> <td></td>	DATE: 2023.05.26	
PROJECTION	DRAWING TYPE: Customer Drawing	
	UNITS: mm	SCALE: 2.5:1
		SHEET/OF: 1/1

Nominal dimension Tolerances (mm)

0 to 18	18 to 30	30 to 50	50 to 80	80 to 120	120 to 180	180 to 250	250 to 320
±0.25	±0.3	±0.35	±0.5	±0.7	±0.9	±1.0	±1.2

ANNEWELL 昆山艾尼维尔电子有限公司
 KUN SHAN ANNEWELL ELECTRONICS CO.,LTD