

REV	DESCRIPTION	DRW.	DATE
00	初版发行	M.C.N	2023.08.07

Notes/备注:

1. Electrical properties/电气特性
UL Standard/UL 标准

Use Group/应用组别	B	C	D
Rated Voltage/额定电压 (V)	300	150	300
Rated Current/额定电流 (A)	10	10	10
Withstanding voltage/工频耐电压	AC 1600V/1Min		

IEC Standard/IEC 标准

Rated Voltage/额定电压 (V): 320
Rated Current/额定电流 (A): 17.5

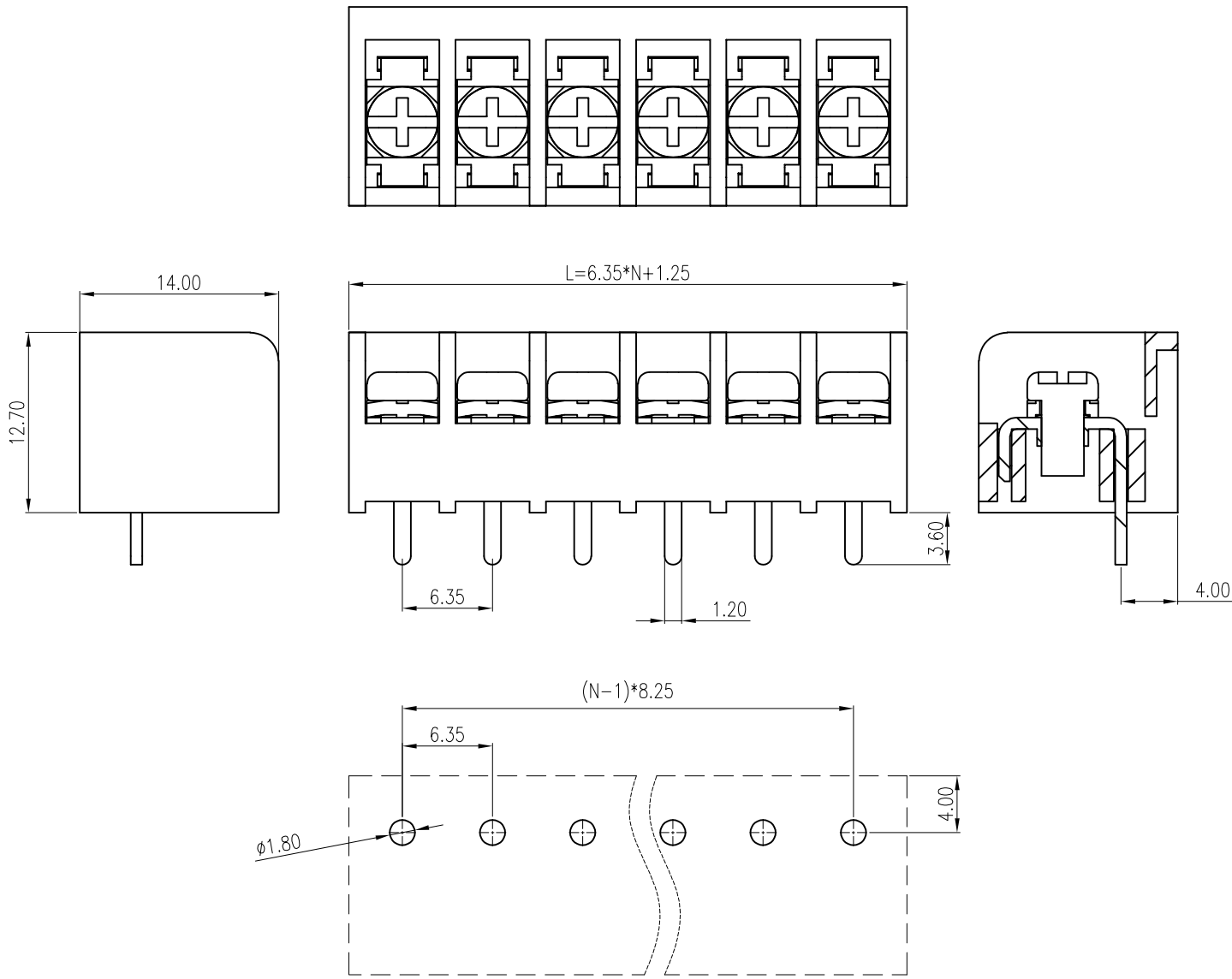
Overvoltage Category/过电压类别 /Pollution Degree/污染等级	II/2	III/2	III/3
Voltage/电压 (V)	630	320	200
Rated Impulse Voltage/冲击耐电压(KV)	4	4	4

2. Connection data/连接数据

Wire range/线径范围(AWG/mm²): 22~16/0.34~1.5
Stripping length/剥线长度(mm): 6~7
Wire tightening torque/导线扭矩(N.m): 0.4~0.5

3. Environmental safety/环境安全

Operating temperature/工作温度范围(°C): -40~+120
RoHS compliant/符合RoHS环保要求



PCB LAYOUT

Nominal dimension		Tolerances (mm)						
0	over	over	over	over	over	over	over	
to	18	30	50	80	120	180	250	
18	to	to	to	to	to	to	to	
	30	50	80	120	180	250	320	
	±0.25	±0.3	±0.35	±0.5	±0.7	±0.9	±1.0	
							±1.2	

APP.	DATE:	PART NO:	
CHK.	DATE:	U-635-02-XXP-L36	
DRW. M.C.N	DATE: 2023.08.07	DARWING TYPE: Customer Drawing	
PROJECTION		UNITS: mm	SCALE: 3:1
		SHEET/OF: 1/1	
		昆山艾尼维尔电子有限公司 KUN SHAN AINEWELL ELECTRONICS CO.,LTD	